



**Technical Guidance Note  
(Monitoring)**

**M1**

**Sampling requirements for stack emission monitoring**

**Environment Agency  
Version 6  
January 2010**

## Record of amendments

Version number	Date	Amendment
4	July 2006	Added definition of a sampling section and amended other definitions in Box 1.2.
		Amended section 2.1 to include the measurement of velocity.
		Amended guidance on selection of a suitable sampling location for sampling gas concentrations (section 2.2.2).
		Amended guidance on determining if stack gases are homogenous (section 2.2.3).
		Explained principle for sampling inhomogeneous gases and added reference to prEN15259.
		Amended guidance on locating CEMs (section 3.1).
		Restructured section 4.1 on sampling facilities.
		Amended statement referring to weather protection on platforms (section 4.1.1).
		Added clarification on probe length (Figures 4.1, 4.2, 4.3 and 4.4)
		Added guidance on assessing the affect of platforms on the structural integrity of stacks (section 4.1.7).
		Restructured Section 4.2 on risk management
		Added details of standards and guidance documents related to the inspection of the structural integrity of stacks (Annex 2).
		5
Major revision of section on sampling facilities		
Addition of information on working at heights		
Addition of sampling facility check sheet		
6	Jan 2010	Added reference to MID for EN 15259 (section 6)
		Updated Risk management approach to site work (section 9)
		Added links to HSE guidance (section 9)

## Status of this document

This TGN may be subject to review and amendment following publication. The most recent version of this note is available on our website at:

[www.mcerts.net](http://www.mcerts.net)

## Feedback

If you have any comments on this document please contact Rupert Standring at [Rupert.Standring@environment-agency.gov.uk](mailto:Rupert.Standring@environment-agency.gov.uk)

## **Foreword**

### **Purpose**

This Technical Guidance Note (TGN) on sampling requirements for monitoring stack emissions to air is one of a series providing guidance to our staff, monitoring contractors, industry and other parties interested in stack emission monitoring. It is also a guidance document in support of our Monitoring Certification Scheme (MCERTS) and Operator Monitoring Assessment (OMA).

It provides guidance on European standard BS EN 15259:2007 Requirements for measurement sections and sites and for the measurement objective, plan and report. It focuses on the parts of the standard that deal with measurement sections and sites.

This TGN also provides guidance on risk management in stack emission monitoring.

Throughout the document, references to sampling from stacks should be interpreted as also meaning sampling from vents, ducts and flues, unless otherwise stated.



## Contents

1. Monitoring guidance and MCERTS .....	1
2. EN 15259 – Requirements for measurement sections and sites and for the measurement objective plan and report .....	1
3. Designing a representative measurement location.....	2
4. Principles of representative sampling .....	3
5. Periodic sampling using grid measurements .....	5
5.1 Grid measurement positional requirements.....	5
5.2 Criteria for locating the sampling plane.....	5
5.3 Surveying the proposed sampling plane.....	6
5.4 Preliminary velocity survey .....	6
5.5 Number of sampling points .....	6
5.6 Position of sampling points along the sample lines .....	6
6. Representative sampling of gases .....	6
7. Sampling requirements: continuous emissions monitoring systems .....	7
8. Sampling facilities for stack-emission monitoring .....	8
8.1 Permanent platforms .....	8
8.2 Space for the equipment and personnel.....	8
8.3 Means of entry into the stack (sampling access ports).....	8
8.4 Sampling facilities for periodic monitoring of gases .....	8
8.5 Sampling facilities for CEMs.....	9
8.6 Essential services.....	9
8.7 Installing and upgrading sampling platforms at existing stacks .....	9
8.8 Alternatives to permanent platforms .....	10
9. The risk-management approach to site work.....	10
9.1 Safety has the highest priority .....	10
9.2 Prominent hazards encountered when stack-emission monitoring .....	10
9.3 The risk-assessment process.....	11
9.4 Responsibilities .....	12
9.5 When to carry out a risk assessment .....	12
9.6 Getting the operator involved.....	13
9.7 Working at heights .....	13
Annex 1 - Check sheet of sample facility requirements for plant designers / operators.....	19
Annex 2 Examples of platforms and sampling ports.....	22
References .....	27



## 1. Monitoring guidance and MCERTS

We publish Technical Guidance Notes (TGNs) to provide advice and support in relevant subject areas. This TGN covers sampling and safety requirements for stack emission monitoring. It is one of a series of TGNs in the ‘M’ series providing guidance on regulatory monitoring and support to our Monitoring Certification Scheme MCERTS.

MCERTS for manual stack emission monitoring (see box 1.1) provides for the assessment of the quality and reliability of organisations, and the competence of individuals carrying out stack emission monitoring against published performance standards for organisations<sup>1</sup> and personnel<sup>2</sup>.

### Box 1.1 MCERTS

MCERTS is our Monitoring Certification Scheme for instruments, monitoring and analytical services. The scheme is built on proven international standards and provides industry with a framework for choosing monitoring systems and services that meet our performance specifications. MCERTS reflects the growing requirements for regulatory monitoring to meet European and international standards. It brings together relevant standards into a scheme that can be easily accessed by manufacturers, operators, regulators and laboratories. Further information on MCERTS is available at [www.mcerts.net](http://www.mcerts.net)

## 2. EN 15259 – Requirements for measurement sections and sites and for the measurement objective plan and report

Comité Européen de Normalisation (CEN) standard BS EN 15259<sup>3</sup> is a European standard that is of importance to plant designers, plant operators and stack emission monitoring organisations.

In summary BS EN 15259:

- specifies requirements for stack emission monitoring measurement locations;
- applies to both periodic measurements and to continuous emission measurement systems (see Box 2.1);
- outlines the sampling strategy required to obtain a representative sample.

This TGN provides guidance on meeting the requirements of BS EN 15259. It does **not** repeat text, tables or diagrams from BS EN 15259, instead it refers to the relevant sections of this standard. It is therefore strongly recommended that the reader has a copy of BS EN 15259.

### **Box 2.1: Periodic and continuous measurements**

**Periodic measurements** – a measurement campaign is carried out at periodic intervals, for example, once every three months. The sample is withdrawn from the stack (extractive sampling). An instrumental or automated technique may be used, where the sampling and analysis of the substance is fed to an on-line analyser. Alternatively, a technique may be used where a sample is extracted on site and analysed later in a laboratory. Samples may be obtained over several hours, or may be so-called “spot” or “grab” samples collected over a period of seconds to several minutes.

**Continuous emissions monitoring systems (CEMs)** – automated measurements carried out continuously, with few if any gaps in the data produced. Measurement may be carried out *in situ* in the stack (for example, cross-duct monitoring), or extractive sampling may be used with an instrument permanently located at or near the stack. CEMs are also referred to as Automated Monitoring Systems (AMS), particularly in a European context.

## **3. Designing a representative measurement location**

Suitable measurement sections and measurement sites are necessary to obtain reliable and comparable emission measurement results. Therefore, appropriate measurement sections and sites should be planned when designing a plant. Terms related to the measurement section and site are given in Box 3.1

### **Box 3.1 Definitions of important terms in stack emission monitoring**

*Stack, duct or flue* – a structure through which gases pass. Typically stacks are intended to be of sufficient height to adequately disperse emissions in the atmosphere. The terms duct and flue are synonymous.

*Measurement section* - region of the stack or duct that includes the sampling plane and the inlet and outlet sections.

*Measurement plane* – the plane normal to the centreline of the stack or duct at the sampling location.

*Measurement location or site* – the working area around the sampling plane on a stack or duct.

*Sampling lines* – imaginary lines in the sampling plane along which sampling points are located, bounded by the inner wall of the stack or duct.

*Measurement ports or access ports* – points in the wall of the stack or duct through which access to the emission gas can be gained.

*Measurement point* – the specific position on the sample plane from where the sample is extracted.

Emission measurements require appropriate measurement ports and working platforms. Therefore, the installation of measurement ports and working platforms should be taken into account in the planning phase of a measurement section.

## 4. Principles of representative sampling

The mass concentration of a stack emission is the concentration of the measured component averaged over the cross section of the stack, averaged over a defined time period.

Concentration distributions may differ across a stack and over time. If concentration and / or velocity profiles, which are variable in space and time occur, the emissions are determined as the integral for time and space over the stack area. This means that the average concentration and velocity at several measurement points across a stack may need to be determined.

For gases carrying **particulates** inertial effects introduced by gravity and the duct geometry lead to the particles being unevenly distributed in the stack. Samples must be obtained from multiple sample points (a grid measurement) across the sampling plane to give an overall average of the particulate emission. Rules have been developed specifying where these sampling points should be located. Rules have also been developed for determining the flow criteria that a cross section must comply with in order to carry out a grid measurement – these rules are based on having an even flow profile.

For extractive particulate methods, the sample must be collected isokinetically (see Box 4.1) using a grid measurement approach.

Stack **gases** may be non-homogeneous due to differences in chemical composition, or differences in temperature and velocity, which may lead to stratification and swirling. However, simplifications for gas sampling can be made if the concentration does not change over the cross section of the stack.

Therefore, where the measurement is of concentrations of gaseous species alone, a sampling location can be chosen that does not have to take into account the requirements to measure flow and particulates. This means requirements on designing a measurement section to measure gas concentrations alone can be less stringent than for measuring flow or particulates. Also, provided the gases are well mixed the sampling approach is more straightforward because single point sampling may be carried out rather than grid sampling.

However, these simplifications for gas sampling can only be made if it can be proven that the stack gas is homogenous (i.e. well mixed).

If the gases are not well mixed, it is necessary to sample the gases using a grid measurement technique. When a grid measurement technique is required it is necessary to be able to measure the velocity at several points across the sample plane. This means that it is advisable to consider, at the design stage, the possibility of the gases being inhomogenous.

Also, if the mass emission rate of a gas is to be calculated, the gas volumetric flow rate will need to be measured; this will require velocity measurements to be made at several points across the sampling plane using a grid measurement approach.

Some pollutants, for example, metals and dioxins, are present in both particulate and vapour phases. Other pollutants for example, hydrogen chloride, may be present in an aerosol phase and vapour phase. Aerosols are normally treated as particulates. In all such cases grid measurement sampling is required.

#### **Box 4.1 The importance of isokinetic sampling for particulates**

*Isokinetic sampling* is achieved when the gas enters the sampling nozzle at the same velocity and direction as the gas travelling in the stack or duct.

Periodic sampling of particulates requires extractive isokinetic sampling methods. The principle of isokinetic sampling is that a sharp-edged nozzle is positioned in the stack facing into the moving gas stream and a sample of the gas is extracted through it, at the same velocity as the gas in the stack, for a measured period of time. To allow for non-uniformity of particulate distribution, samples are taken at a pre-selected number of points across the sample plane. The particulates collected in the sampler are later weighed, and the concentration of particulate matter in the stack is calculated using the volume of gas sampled. The mass flow rate of particulate matter in the stack can be calculated from the concentration and the velocity of gas in the stack.

Due to the wide range of particle sizes normally present in process emission streams, it is necessary to sample isokinetically to ensure that a representative sample of the particulate emission is obtained.

If the sampling velocity is less than the isokinetic rate, at first sight it would appear, that the emission will be underestimated. However, because the sampling rate is too low, there is a divergence in flow around the sampling inlet. Small particles are able to follow the flow and a percentage of them will not be sampled. Larger particles, on the other hand, are not able to follow the flow because of their greater inertia and more of these particles will enter the sampler. Thus a sub-isokinetic sampling rate will lead to a bias in the sampled particle size distribution towards the larger particles. This could lead to an overestimate of the particulate concentration depending on the original size distribution.

Sampling at a rate in excess of the isokinetic rate will lead to a bias in the sampled particle size distribution towards the smaller particles. This could lead to an underestimate of the emission concentration depending on the original size distribution.

## 5. Periodic sampling using grid measurements

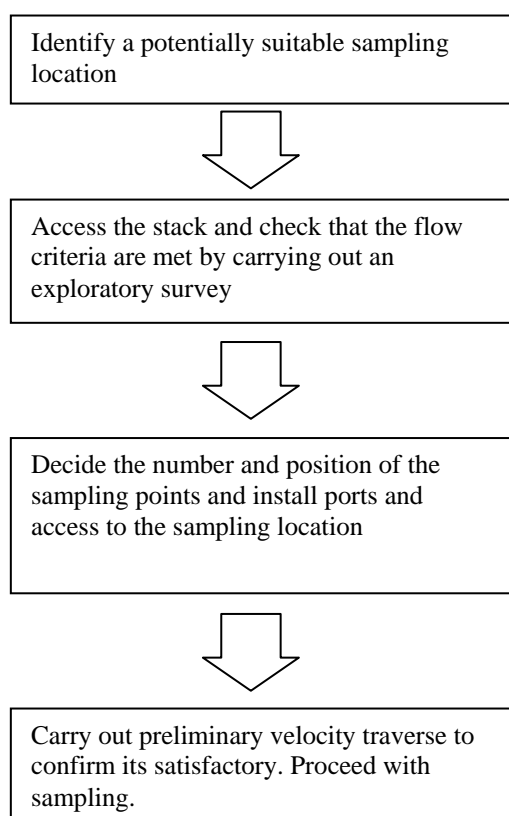
### 5.1 Grid measurement positional requirements

BS EN 15259 details the positional requirements for carrying out a grid measurement. This approach is used for:

- sampling particulates
- sampling multiphase pollutants
- wet chemistry sampling when droplets are present
- velocity measurements for reporting mass emission
- sampling gases that are distributed inhomogeneously, due to effects, such as stratification
- determining a representative sample location for CEMs

### 5.2 Criteria for locating the sampling plane

The general approach for locating a sample plane for grid measurements can be summarised as:



Sampling must be carried out at a suitable location on the stack. Bends, branches, obstructions, fans and leaks can all cause undesirable variations in the velocity profiles, which may make the location unsuitable for sampling.

Detailed information on locating a measurement plane in a stack is given in section 6 of BS EN 15259. Annex 1 and 2 of this document provides a summary of this information.

### **5.3 Surveying the proposed sampling plane**

An exploratory survey of the proposed sample plane should be undertaken. This should include a stack gas velocity survey. For metal or other thin walled stacks, 13mm diameter pilot holes, drilled through the flue wall on the centres of the proposed sample access holes, may enable a small bore Pitot-static tube and thermocouple probe of suitable length to be used for this purpose. The use of such temporary access holes distinguishes the exploratory velocity traverse from the preliminary velocity survey. The latter should be performed through permanent access ports.

Wherever possible, its important that this approach is followed, so that the sample plane location is shown to be suitable before installing comprehensive and expensive sampling access and facilities on a stack.

### **5.4 Preliminary velocity survey**

A preliminary velocity traverse should be carried out before sampling is carried out at a location for the first time. To establish that a sampling location is suitable, measurements of gas velocity should be carried out at equally spaced points along each proposed sampling line (a grid measurement). Measurements at these sampling points must demonstrate that the gas stream at the sampling plane meets the flow stability criteria requirements. If the results do not conform to the flow stability criteria, another sample location should be found.

Detailed information on the required flow criteria is given in section 6 of BS EN 15259.

### **5.5 Number of sampling points**

The number of sampling points required is determined by the size of the stack. The minimum number of sampling points and sample lines are given in section 8 of BS EN 15259.

### **5.6 Position of sampling points along the sample lines**

The sampling plane is divided into equal areas and sampling is carried out from points in the centres of these areas. Further details are provided in section 8 of BS EN 15259.

## **6. Representative sampling of gases**

Gases can be sampled using a grid measurement approach. The sampling points in the grid are determined in the same way as for flow stability checks and isokinetic sampling. However, when an instrumental technique is used the length of time spent at each point is proportional to the concentration of the gas in the stack and the velocity at the sample point.

As gases are often well mixed, it may be possible to prove that a grid measurement may not be required and that sampling from a single point may be carried out. This is done by assessing spatial and temporal variations in the gas concentration. The procedure for doing this is given in section 8 of BS EN 15259.

If the distribution is inhomogeneous, it may still be possible to sample from a single point provided that a single representative point can be found. The approach is based on assessing whether the variations in concentration across the stack are within the allowable measurement uncertainty. The procedure to determine if a representative point can be found is given in section 8 of BS EN 15259.

If a representative point cannot be found due to the gas being inhomogeneous, grid measurements must be carried out. Where grid measurements are required it is necessary to measure the velocity at each sample point, so that representative sampling can be achieved.

Once the homogeneity test has been completed it does not need repeating unless there is a significant change in the fuel type, structure of the stack or process abatement systems.

Further information on the application of the homogeneity test is available in Environment Agency Method Implementation Document (EA MID) for EN 15259<sup>4</sup>.

## **7. Sampling requirements: continuous emissions monitoring systems**

In many applications, the calibration of CEMs is established by comparison with simultaneous measurements obtained using a periodic standard reference method. Further information is contained in EN 14181<sup>5</sup> and TGN M20<sup>6</sup>.

Wherever possible, the CEMs and periodic monitoring locations should be in close proximity. Therefore, the same location requirements apply to periodic monitoring and CEMs.

Permanently installed CEMs are usually restricted to sampling at a single point, or along a single line-of-sight. These sampling points or lines must be located, so that a representative sample of the measurand is obtained. They must be positioned so as not to obstruct, or be affected by, sampling probes used to perform periodic measurements.

For point source in-situ or extractive CEMs, it is necessary that the measurement point is representative of the mass flow density of the determined being measured, and often also the oxygen volume fraction. The procedure for determining a representative sampling point for a CEM, along with a worked example, is given in section 8 of BS EN 15259 and EA MID for EN 15259.

## **8. Sampling facilities for stack-emission monitoring**

### **8.1 Permanent platforms**

Permanent platforms must be provided with handrails and kick-boards that meet the requirements of the Workplace (Health, Safety and Welfare) Regulations 1992, (Regulation 13) for permanent platforms and the Health and Safety in Construction Regulations (HS(G)150) for temporary platforms.

Sampling from roofs or the tops of arrestment equipment, vessels and ducts is unacceptable unless they have been assessed as being suitable by meeting the requirements for platforms described in this TGN and The Work at Height Regulations 2005 (WAHR), Regulation 8 and Schedule 3<sup>7</sup>.

Protection from adverse weather may be desirable for an exposed sampling position. However, it should be recognised that any protective cladding installed at high levels will affect wind loading on the stack and will be vulnerable to damage during high winds. It may be preferable to ensure that sampling at elevated positions is only carried out in periods of relatively calm weather as the installation of an enclosure at the sampling platform does not remove the hazard of transporting equipment and personnel to the platform under unfavourable conditions.

Annex 1 of this document provides a summary of the information on platforms and sampling facilities in BS EN 15259.

### **8.2 Space for the equipment and personnel**

Platforms must have a sufficient working area to manipulate the sampling probe and operate the measuring instruments, without equipment overhanging guardrails.

Annex 1 of this document provides a summary of the information on platform sizes in BS EN 15259.

Example diagrams of platform designs are shown in Annex 2.

### **8.3 Means of entry into the stack (sampling access ports)**

The access ports shall be big enough for the insertion and removal of the equipment used, and to allow the sampling points to be reached.

Typical arrangements of access fitments are shown in Annex 2.

### **8.4 Sampling facilities for periodic monitoring of gases**

Access and facilities requirements for gases alone are usually less demanding than for particulates. In practice, meeting the requirements for particulates will also satisfy the requirements for gases. When gas concentrations only are to be monitored, smaller access ports than those specified for particulates may be possible.

## **8.5 Sampling facilities for CEMs**

When designing a platform for CEMs access and facilities are required to enable:

- calibration by periodic monitoring;
- routine maintenance and operational functional checks, such as span and zero checks to be carried out.

As CEMs require calibration by periodic monitoring the access and facilities should as a minimum comply with the requirements for particulates and gases respectively.

## **8.6 Essential services**

Details of essential services, such as electricity supply, lifting equipment, ventilation and lighting are provided in Annex 1.

A sampling monorail may be attached above the sampling ports to enable certain designs of sampling train to be suspended.

## **8.7 Installing and upgrading sampling platforms at existing stacks**

It is sometimes necessary to retrofit new platforms or upgrade platforms on existing stacks. It must be borne in mind that the original design of the stack may not have taken such changes into account. The installation or extension of fixed ladders and gantries to an existing stack will bring about a significant increase to the total load (especially wind load) on the structure. This effect may be particularly significant on stacks with small diameters, as they must support structures that meet the minimum size requirement specified in this TGN.

When retrofitting fixed ladders and platforms to a stack an appropriately qualified engineer\* should be engaged to carry out a design check of all components, including foundations, to ensure that it is capable of bearing the increased load. To carry out this assessment full design details of both the existing structure and the proposed sampling platforms and access ladders must be available. It is also likely that the engineer will require the stack to be inspected by a competent specialist contractor to ensure that deterioration has not occurred to the overall stability of the structure. If necessary, it may be possible to carry out minor strengthening works to an existing structure to accommodate additional load, although there is a limit to the effectiveness of this approach.

If the changes to the platform are supported by the existing structure then the requirement for inspection of the platforms prior to use may well need to be extended to the stack itself.

\*Details of qualified engineers and specialist inspection contractors can be obtained from trade associations such as The Association of Technical Lightning and Access Specialists ([www.atlas-1.org.uk](http://www.atlas-1.org.uk)).

## 8.8 Alternatives to permanent platforms

Industrial processes are regulated by Environmental Permitting Regulations (EPR). These place requirements on an operator to provide a safe permanent means of access to enable monitoring to be carried out at specified release points. However, in exceptional circumstances, at an old installation where limited access prevents the installation of a permanent platform, temporary structures may be used, provided it is fully justified by the operator and the sampling team.

## 9. The risk-management approach to site work

### 9.1 Safety has the highest priority

Safety must be considered at the earliest point in the monitoring strategy and must be given the highest priority. For example, a modification to the sampling position that would theoretically provide a technical improvement must not proceed if it introduces an unacceptable safety risk.

There are many hazards associated with stack monitoring. It is recommended that, as a minimum, the hazards described in section 9.2 of this TGN should be included in a risk assessment. However, there may be other hazards - every site is different. Detailed information is also provided in the Source Testing Association's (STA) booklet *Risk Assessment Guide: Industrial-emission Monitoring* (see box 9.1).

#### **Box 9.1 STA Risk Assessment Guide: Industrial-emission Monitoring**

The Source Testing Association (STA) is a trade association based in the UK. It is for organisations involved in stack emissions monitoring. The members of the STA have developed an Industrial risk assessment guide (known as the "yellow book").

#### **Reporting accidents and near misses**

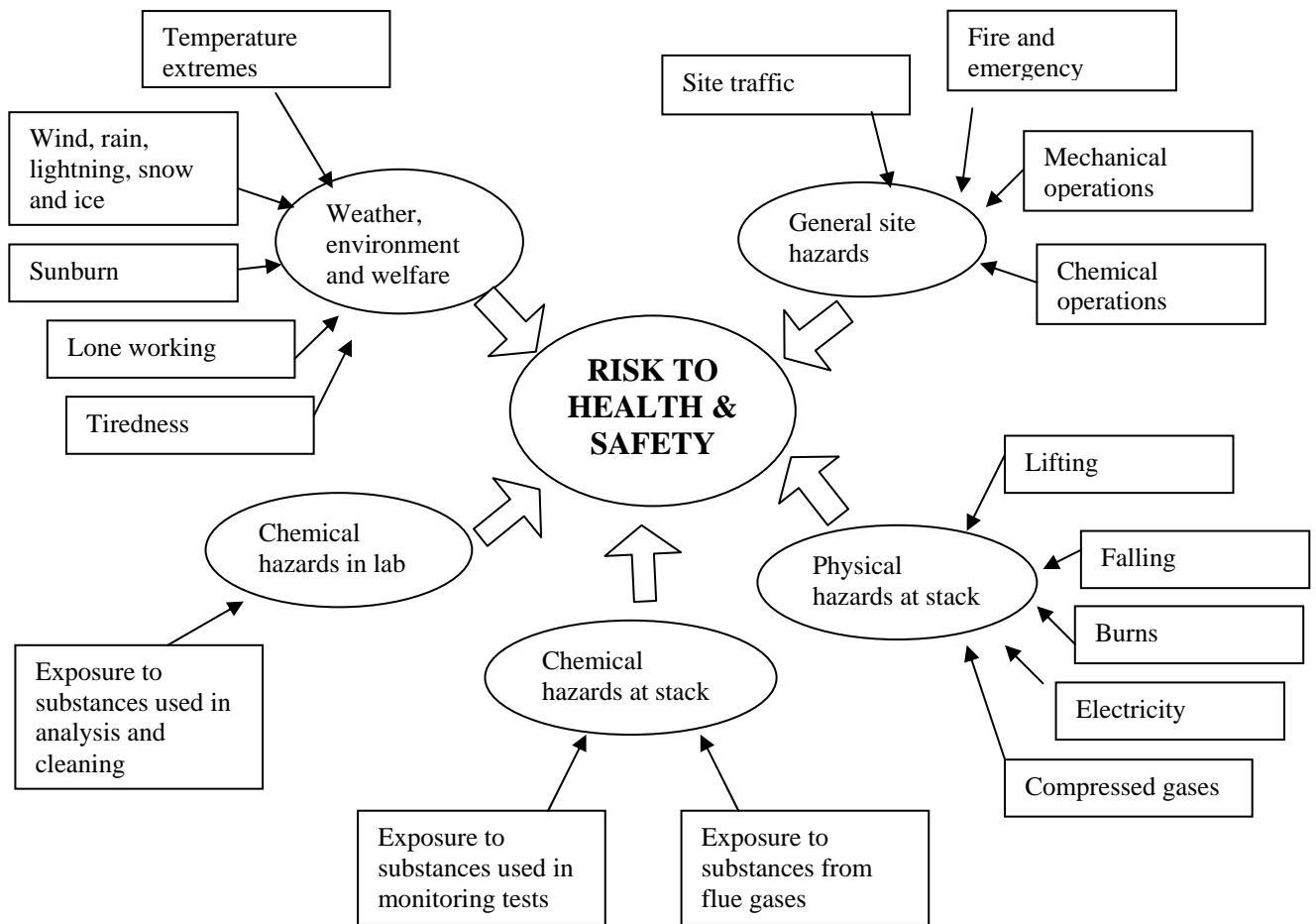
It is strongly recommended that information about accidents and near misses are reported to the STA. Knowledge of these, however minor they may appear, helps prevent future accidents occurring.

The focus of this section is on periodic monitoring, as it requires a considerable amount of manual work on site. However, the principles apply equally when carrying out work on CEMs, for example, during installation, maintenance and calibration.

### 9.2 Prominent hazards encountered when stack-emission monitoring

The most prominent hazards are shown in Figure 9.1. It must be reiterated that this is not an exhaustive list and there may be other hazards. Every site is different.

**Figure 9.1 Most prominent hazards associated with stack monitoring**



### 9.3 The risk-assessment process

The HSE have published “Five steps to risk assessment”. It is available from:

<http://www.hse.gov.uk/pubns/indg163.pdf>

It is very important to read and understand “Five steps to risk assessment” because it explains the risk assessment process, hazards and risks and the hierarchy of control measures.

The distinction between hazard and risk and examples of control measures applied to stack emissions monitoring are shown in Box 9.2 and 9.3 respectively.

<p><b>Box 9.2 The distinction between hazard and risk</b></p> <p><b>Hazard</b> - a substance or physical situation with inherent <i>potential</i> to cause harm</p> <p><b>Risk</b> - an estimation of the <i>likelihood</i> of that potential being realised, within a specified period or in specified circumstances, and the consequence</p>
--

### **Box 9.3 Hierarchy of control measures**

- 1) Eliminate** – for example working at ground level to prevent falls from height\*
- 2) Substitute** – for example replacing a sample train rinsing solution with a less hazardous one
- 3) Engineering** - for example, a self-closing gate to reduce the risk of falls from the platform
- 4) Procedural** - for example, permit-to-work systems, cordoning of a work area using barrier tape
- 5) Personal protective equipment** - for example, safety goggles to reduce the risk of eye injury when opening access ports

\*In stack emissions monitoring it is difficult to eliminate working from height. This usually means that engineering control measures are particularly important.

## **9.4 Responsibilities**

The monitoring team must carry out a comprehensive risk assessment of the work they carry out on site.

Where operators contract out the monitoring, both the operator and monitoring contractor have the responsibility as site occupier and employer to follow safe systems of work.

## **9.5 When to carry out a risk assessment**

Where a monitoring organisation has not previously carried out sampling from a particular stack, a site review will be necessary in order to carry out a risk assessment.

It is very important to understand that all safety improvements and control measures *must* be in place before the monitoring team starts work. For this reason, a risk assessment should be carried out as part of a site review, as this gives the site operator time to implement any control measures found to be necessary.

As well as carrying out a risk assessment at the site review stage, the monitoring team must carry out a risk assessment before they start sampling work. The findings of the risk assessment should be reviewed and agreed by the members of the monitoring team. It is important that this risk assessment is carried out at the start of *every* monitoring campaign at a site, even if the team has been there before. If the monitoring campaign is over several days, the risk assessment should be reviewed every day because changes can occur on a daily basis. This is good practice because it focuses the team's attention on safety as the first issue to address on-site. It also reduces the possibility of the staff becoming complacent after several visits because they feel they know all the issues.

## 9.6 Getting the operator involved

When the monitoring team arrives on-site, its first task must be to conduct the risk-assessment. If the team has not worked on the site before, the operator's representative should accompany them as they make the assessment for reasons of safety and to provide knowledge of specialised site-specific issues (for example, process conditions, escape routes). It is not always necessary for the team to be accompanied during the risk assessment when they return for repeat visits.

However, whether it is the team's first visit to the site or a repeat visit, the operator's representative should be briefed on the findings of the completed risk assessment. This will give the operator the opportunity to raise any additional issues of concern, and comment on the findings of the assessment and the control measures the monitoring team has decided will be necessary. If the operator has any relevant comments, these should be considered. They can be incorporated into the assessment and its findings if they reduce the risk further.

When the site work is finished, any relevant comments should be noted on the risk assessment based on any lessons learnt. This will be useful for the next visit.

## 9.7 Working at heights

Due to technical reasons it is usually necessary to carry out stack emission monitoring at height. Falls from height is the number one cause of fatalities at work. Falls from heights can occur from steps, ladders, platforms, scaffolding and roofs.

Working at heights may also affect people in the area below where the work is taking place. Falling objects, such as equipment and tools can strike a person causing serious injuries.

The WAHR 2005<sup>7</sup> are legally binding regulations that must be complied with. A summary of these regulations are provided below.

### 9.7.1 Organisation

Every employer must ensure that work at height is:

- properly planned by a competent person
- appropriately supervised and
- carried out in a safe manner

There is also a requirement to **plan for emergencies and rescue**. Therefore, an employer should have a rescue plan should something go wrong when working at height. This plan should consider what to do after a fall or if a medical emergency occurs without a fall. For example, what provisions are in place to get an unconscious person down from a platform that is accessed by vertical ladders only.

The rescue plan should consider:

- equipment available
- is stretcher access feasible when stairs, ladders or hatches are present?
- does the site have its own rescue team?
- what are the evacuation procedures?
- how long will a rescue take?
- can it be done, ideally, without relying on the emergency services (fire brigade)?

### **9.7.2 Competence and training**

To demonstrate that the work is planned by a competent person it is necessary to have specific training. Training should include attending relevant courses, such as a working at height course and a lifting and slinging course.

While undergoing training, employees should be supervised by a competent person.

### **9.7.3 Avoidance of risks**

The regulations require the use of the following strict hierarchy of control:

- avoid the need to work at height
- prevent the fall
- mitigate the fall

Due to technical reasons, it is usually not possible to avoid working at height when carrying out stack emission monitoring. This means the next best hierarchy of control is to prevent the fall. Preventing a fall requires the use of engineering control devices, such as handrails. These controls are known as collective passive protection.

Vertical ladders do not have engineering control measures in place. Therefore, the use of personal protection (work restraint) systems are important for preventing falls from vertical ladders. They are very simple to use, they do not require specialised inspection regimes and they do not have to comply with specific standards that are required for fall arrest systems.

It is important to understand that personal protection systems are different from fall arrest devices. Fall arrest systems are used to stop people being injured after they have fallen. Fall arrest systems are a method of last resort and are not considered appropriate for stack emission monitoring (i.e. the sampling location should have sufficient controls in place to prevent falls from occurring). Fall arrest systems require specialist training and highly technical equipment, that must be inspected regularly by a competent person. These requirements are covered by a number of international standards, which must be complied with.

For the requirements on personal protection systems see WAHR 2005 Regulation 8, Schedule 5<sup>7</sup>. The HSE have published “Selection, using and maintaining personal fall protection equipment”. This is available from:

<http://www.hse.gov.uk/falls/campaign/personalequipment.pdf>

Where fixed vertical ladders, leading to a platform, do not have protection systems in place, using them as a means of access needs to be justified by a risk assessment. Under these circumstances, it is necessary to rely on behavioural safety because there is no control measure fitted to prevent falling. In these circumstances the individuals are being relied upon to behave in a safe manner. This includes measures such as:

- cleaning footwear adequately
- maintaining three points of contact on the vertical ladder
- resting adequately on midway platforms
- checking rungs are clean and free from oil and grease

For requirements on ladders see WAHR 2005 Regulation 8 Schedule 6<sup>7</sup>. The HSE have published “Safe use of ladders and step ladders – an employer’s guide”. This is available from:

<http://www.hse.gov.uk/pubns/indg402.pdf>

#### **9.7.4 Fragile surfaces**

The employer must take suitable and sufficient steps to prevent any person from falling through any fragile material. This requires coverings, guard rails and warning notices.

#### **9.7.5 Falling objects**

It is necessary to take steps to prevent the fall of any material or objects. The following controls are examples of appropriate control measures:

- do not take equipment up unless necessary (for example, keeping a manual sample train meter box at ground level with an umbilical line to the platform is good practice)
- use of toe boards
- tie off equipment

#### **9.7.6 Danger area**

The danger area refers to the following locations:

- where there is a risk of a person falling
- where there is a risk of a person being hit by a falling object.

Where there is a risk of being hit by a falling object, it is a requirement to provide clear indication of the danger area. This is done by cordoning off the area below and using men working overhead signs to create an **exclusion area**.

A major risk of falling equipment is caused by having to lift equipment to the working platform. Ideally there should be a well maintained permanently installed **lifting system**. However, if the platform does not have a permanently installed lifting system the stack emission monitoring team will have to use their own system. There is a wide choice of portable systems available. Lifting systems must use non-stretch static rope. There is a statutory requirement for them to be thoroughly inspected every 12 months. They should also be inspected pre-use or following any abnormal event.

Training is required to be able to carry out an inspection of a lifting system. It is also very important for stack emission monitoring personnel to attend a **lifting and slinging** course.

The lifting systems should be supported to a structure that has been assessed as suitable to support the lifting of equipment (most handrails are not suitable for this purpose). The lifting system should also be designed so that its not necessary to lean over handrails when lifting equipment. A work restraint system may also be beneficial when handling loads over a handrail..

### **9.7.7 Inspection of work equipment**

The platform and access must meet all current legislative requirements regarding dimensions and construction, be maintained to a safe standard and undergo regular inspection by a competent person. The structural integrity of the platform and any supports and attachments must be assessed periodically by the process operator. The inspection must also include the effects of weathering, corrosion and damage. The frequency and comprehensiveness of inspection must be commensurate with the risk of failure and serious injury. For example, a steel platform at height and in a corrosive atmosphere may require more frequent and thorough inspections than a low platform in a normal atmosphere. Records of inspections should be available for the monitoring team to check before they ascend to the work area.

Working platforms and associated guard-rails, barriers, toe-boards and ladders should be inspected by a competent person at the following frequencies:

- after assembly/installation but before use;
- a periodic inspection at suitable intervals, based on exposure to conditions causing deterioration; and
- at each time an exceptional circumstance has occurred, which is liable to jeopardise its safety.

The regulations also require a prior to use check to be carried out. This should be done by each person every time they use the platform. This is not a formal inspection and does not need to be recorded. This prior to use check should take account of factors, such as:

- Ladders: are they secure, with no bolts missing, and free from corrosion and grease?
- Handrails: are they secure, with no bolts missing and free from corrosion?
- Floor plates: are they fixed in place, with no bolts missing and free from corrosion?
- Access hatch: are they closed when not in use?

#### **9.7.7.1 Scaffold**

Temporary, scaffold platforms should be constructed to a specific minimum Scafftag© category of “heavy duty” or meet the requirements stated in the monitoring standard. Special or masonry independent tied scaffold would normally be sufficient. Temporary platforms should be tied to, or supported by, a permanent structure.

Scaffold should meet the same size requirements as specified for permanent platforms.

Scaffolding must be inspected before use. For scaffolding, a properly completed and dated Scafftag© is one means of demonstrating and recording this inspection.

As with permanent platforms the user should carry out a prior to use check each time they use it. As a minimum they should check:

- the ladder is secured
- there are no missing rails
- there are no missing toe boards
- there are no unsecured boards
- the access points are gated
- it meets the size and weight requirements
- its secured to a structure
- there are no hazardous uncapped pole ends, for example, at access points

Requirements on scaffolding are in WAHR 2005 Regulation 8 and Schedule 3<sup>7</sup>. HSE guidance on scaffolding is available from:

<http://www.hse.gov.uk/construction/scaffoldinginfo.htm>

#### **9.7.7.2 Mobile elevated work platforms**

Sampling from mobile elevated work platforms (MEWPs) is unacceptable for the vast majority of stack emissions monitoring work because of the:

- amount of space required to carry out stack emissions monitoring
- amount of stack emissions monitoring equipment required
- weight of stack emission monitoring equipment
- amount of stack emissions monitoring equipment that requires support
- requirement to connect stack emissions monitoring equipment to ground level
- requirement for personnel to have regular access to and from the sample location
- length of time that samples are taken for
- number of people involved in a monitoring campaign
- requirement for them to meet the same size requirements specified for permanent platforms.

Due to the reasons given above it is only acceptable to use MEWPs to carry out monitoring work when the majority of the equipment is kept at ground level. This usually prevents the use of MEWPS when isokinetic sampling is required, or when non-isokinetic sampling is being carried out using isokinetic sampling equipment.

A MEWP may be used if it is decided that this is the best way to minimise the risk. The following are examples of when it may be acceptable to use a MEWP:

- carrying out work for short periods of time (i.e. less than one hour per test)
- when using a hand held battery powered instrument
- sampling for VOCs using charcoal tubes and a battery powered pump
- carrying out a preliminary traverse with an L-type Pitot connected to a battery powered electronic manometer

However, the use of MEWPs should not be justified on the basis of cost, it must be justified on the grounds of being the best way of minimising risk.

Only qualified employees are authorised to operate MEWPs. They must have received training to an industry recognized standard, such as a Powered Access License by the International Powered Access Federation.

It is important to understand that MEWPs may be used to transport stack emissions monitoring equipment up to a platform, as the risk assessment may show that this is safer than other means of lifting the equipment.

HSE guidance on the use of MEWPs is available from:

<http://www.hse.gov.uk/falls/mewps.htm>

#### **9.7.7.3 Sampling from ladders**

It is not acceptable to sample from ladders.

## Annex 1 - Check sheet of sample facility requirements for plant designers / operators

Characteristic	Requirement	✓
<b>Sample plane location</b>	As far downstream or upstream from any disturbance, which could produce a change in direction of flow (e.g. bends, fans)	
	In a section of duct with constant shape and cross sectional area	
	Recommend five hydraulic diameters* upstream and two hydraulic diameters downstream (or five hydraulic diameters from the top of the stack)	
<b>Sample plane orientation</b>	Installation of sample plane in vertical stacks is preferred to horizontal ducts	
<b>Exploratory survey</b>	It is advised that an exploratory velocity traverse is carried out before committing to installation	
<b>Flow criteria</b>	Angle of gas flow less than 15° to duct axis	
	No local negative flow	
	Minimum velocity (a differential pressure of 5Pa, which equates to 3 ms <sup>-1</sup> )	
	Ratio of the highest to lowest gas velocity less than 3:1	
<b>Measurement ports</b>	Planned at design stage because retrofitting can be expensive (for example ducts may have protective linings)	
	Allows access to sample points	
	Its recommended that access ports have a minimum diameter of 125mm. For small stacks (less than 0.7m diameter) a smaller socket (for example 75mm may be necessary)	
	The port socket must not project into the gas stream	
	Additional ports may be required to allow access for measurement of other quantities (for example velocity and water vapour)	
	Additional ports may be required for CEMs	
	For large ducts four ports may be necessary	
	For rectangular ducts the ports should be installed on the longer side	
	The operator must maintain the ports in good condition and free them up prior to work being undertaken	

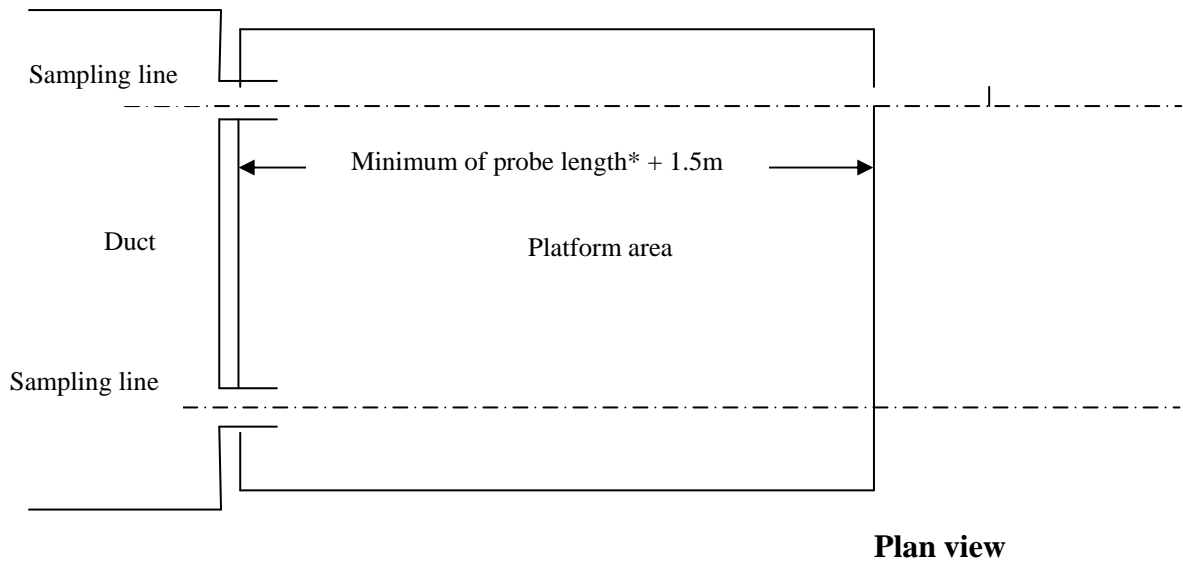
\*Hydraulic diameter is defined as:  $(4 \times \text{area of sampling plane}) / \text{length of sample plane perimeter}$

<b>Characteristic</b>	<b>Requirement</b>	✓
<b>Identification</b>	Clearly identified and labelled measurement section	
<b>Load bearing capacity</b>	Permanent and temporary working platforms must have a load bearing capacity sufficient to fulfil the measurement objective	
	Some measurement objectives may require platforms that support up to six people plus up to 300 kg weight of equipment	
<b>Position and working space</b>	Sufficient working area to manipulate probe and operate the measuring instruments, without equipment overhanging guardrails	
	A sufficient depth of the working area is given by the internal diameter or depth of the duct and the wall thickness plus 1.5 m	
	If two opposite measurement ports are installed for one measurement line, a correspondingly smaller working area is required	
	Its recommended that vertical ducts have a working height from the platform to the ports of 1.2 to 1.5m	
	Provision of dual level sampling platform. These are necessary if the selected sample plane is located in a horizontal section of a large rectangular duct, and some of the sample points are positioned above a convenient and safe working height (nominally 1.5m maximum for sample probe handling)	
	Removable chains or self-closing gates at the platform to prevent workers falling through access hatches or ladders.	
	Prevent accumulation of free-standing water and, if necessary, provide drainage	
<b>Fall prevention</b>	Upper hand rails at a minimum of 950mm (910mm allowed for old handrails). Gaps in rail no bigger than 470mm. Toe boards required	
	Consider installing personal protection systems on vertical ladders	
<b>Access</b>	Easy and safe access available	
	Consider installing work restraint systems on vertical ladders	
<b>Power supply</b>	Single phase 110V electrical power of a suitable current provided by a suitable number of outdoor waterproof sockets at the platform	

Characteristic	Requirement	✓
<b>Lifting equipment</b>	Lifting systems for raising and lowering of equipment, where access to the sampling platform is by vertical, or steeply inclined, ladders or stairs	
	Lifting systems (for example, hoists) and attachments (for example, eyes) must be inspected and maintained by a competent person	
	Installation of a support structure for securing portable lifting systems (handrails are not usually suitable for supporting lifting systems)	
<b>Monorails</b>	Consider sampling monorails above the sampling ports to enable certain designs of sampling train to be suspended	
<b>Exposure to gas</b>	Avoid areas of sources which emit unexpectedly, for example rupture discs, overpressure valves and steam discharges	
<b>Exposure to stack gas</b>	Avoid areas of significant positive pressure	
<b>Awareness</b>	Consider how stack emission monitoring personnel are informed of operating faults that may endanger them?	
<b>Indoor location</b>	Consider locating working platform within a building	
<b>Ventilation</b>	Well ventilated	
<b>Heat and dust</b>	Protection of the working area from heat and dust	
<b>Weather protection</b>	Protective measures (for example, weather protection and heating to ensure conditions are appropriate for personnel and equipment)	
<b>Lighting</b>	Artificial lighting or facilities for temporary lighting	

## Annex 2 Examples of platforms and sampling ports

Figure A2.1 Typical area required behind probe for handling



\*the probe length includes nozzles, suction/support tubes and associated filter housing

Figure A2.2 Plan view of platform working area and orientation recommendations for small vertical circular stacks (<3.6m diameter)

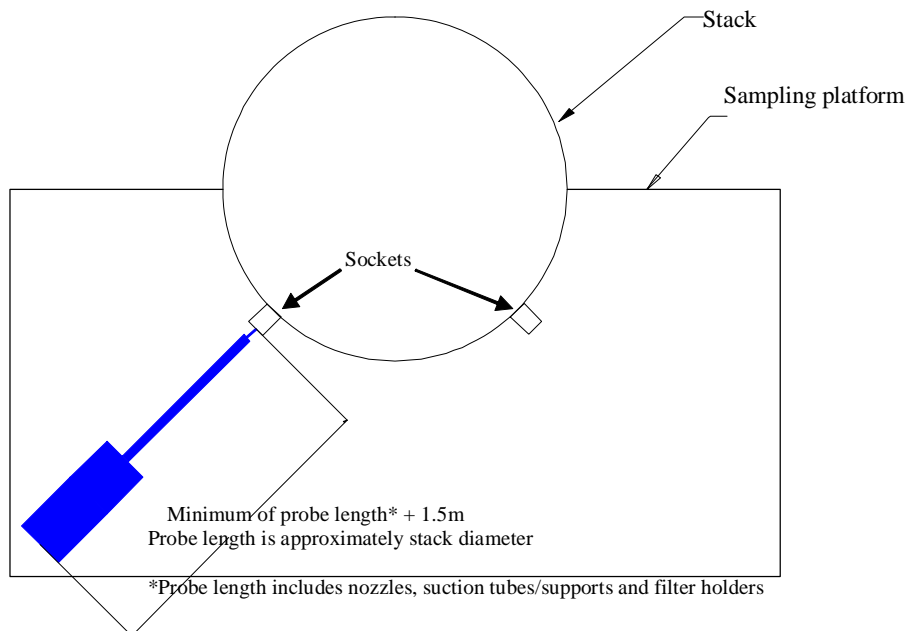
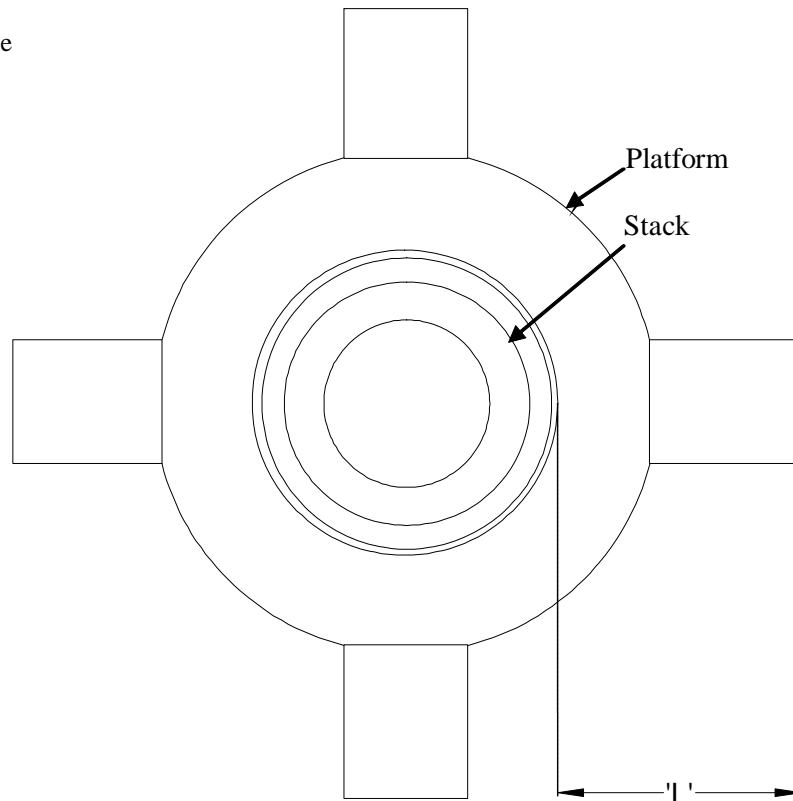


Figure not to scale

**Figure A2.3 Plan and side view of platform working area and orientation recommendations for large vertical circular stacks ( $\geq 3.6\text{m}$  diameter)**

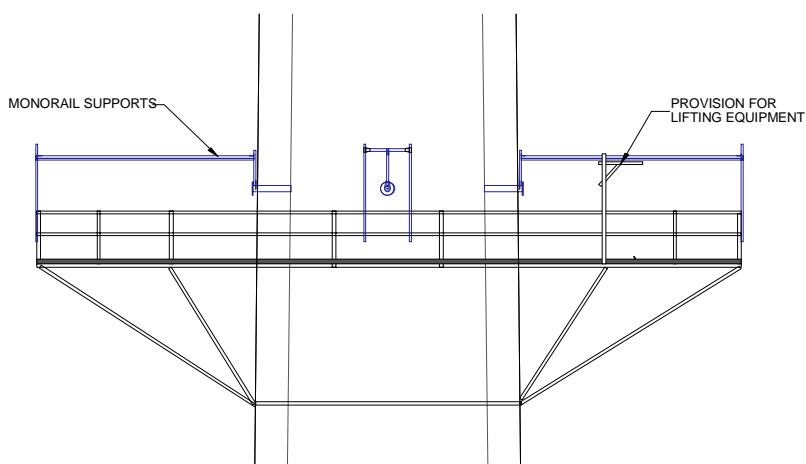
Sampling should be carried out from four sample holes on these large stacks

Figure not to scale

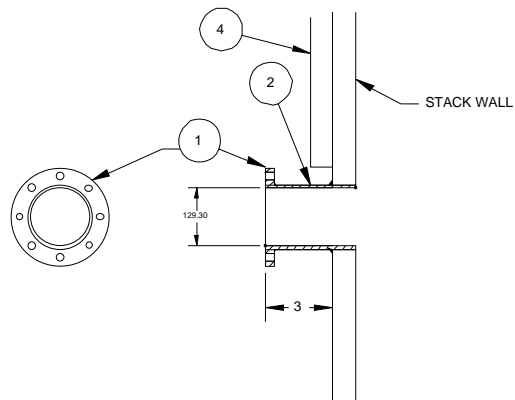


$L$  (Length) = Probe length (includes nozzles, suction tubes/supports and filter housing) + 1.5m

Probe length is approximately stack diameter / 2.

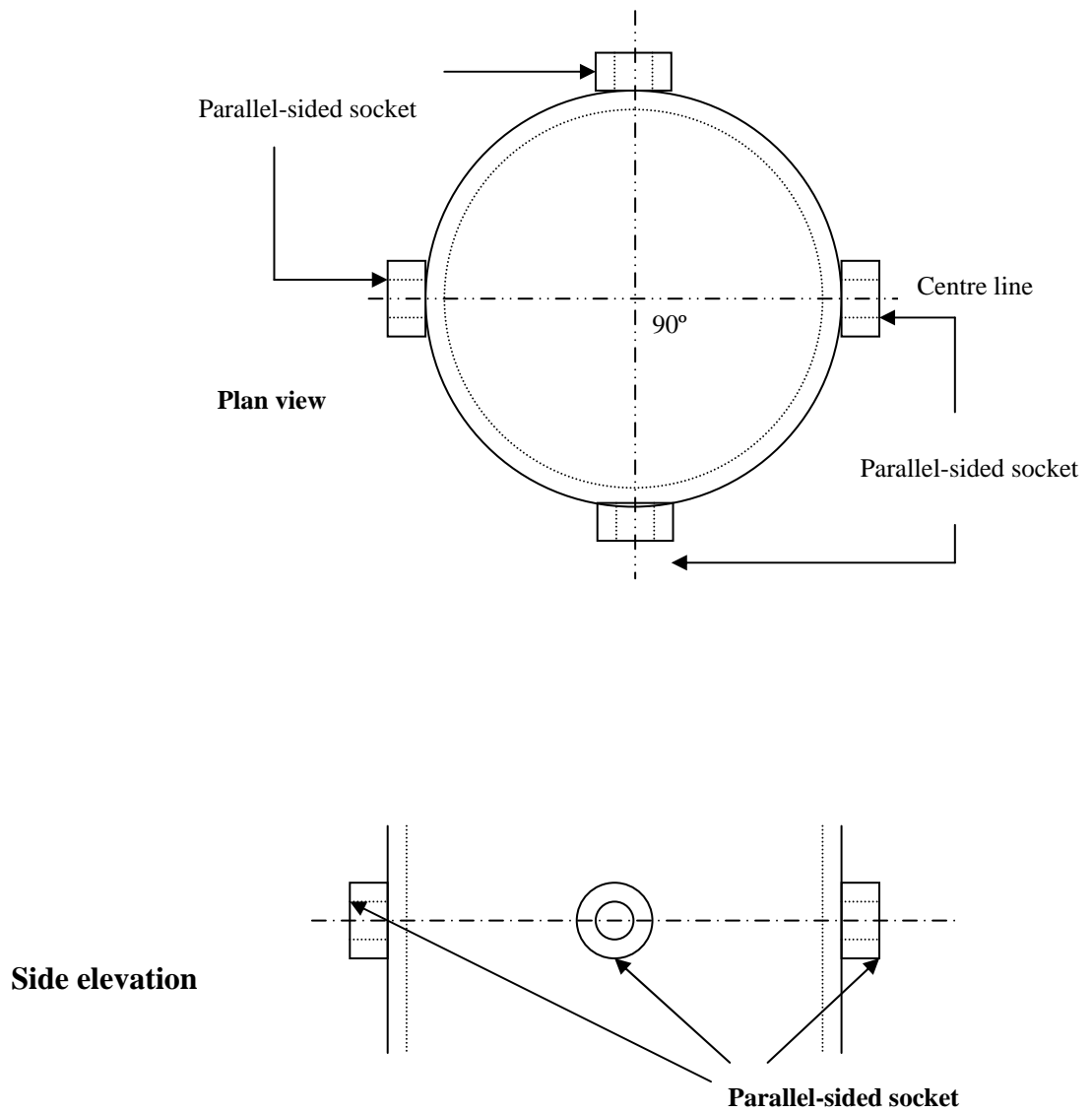


**Figure A2.4 Standard 125mm access port**



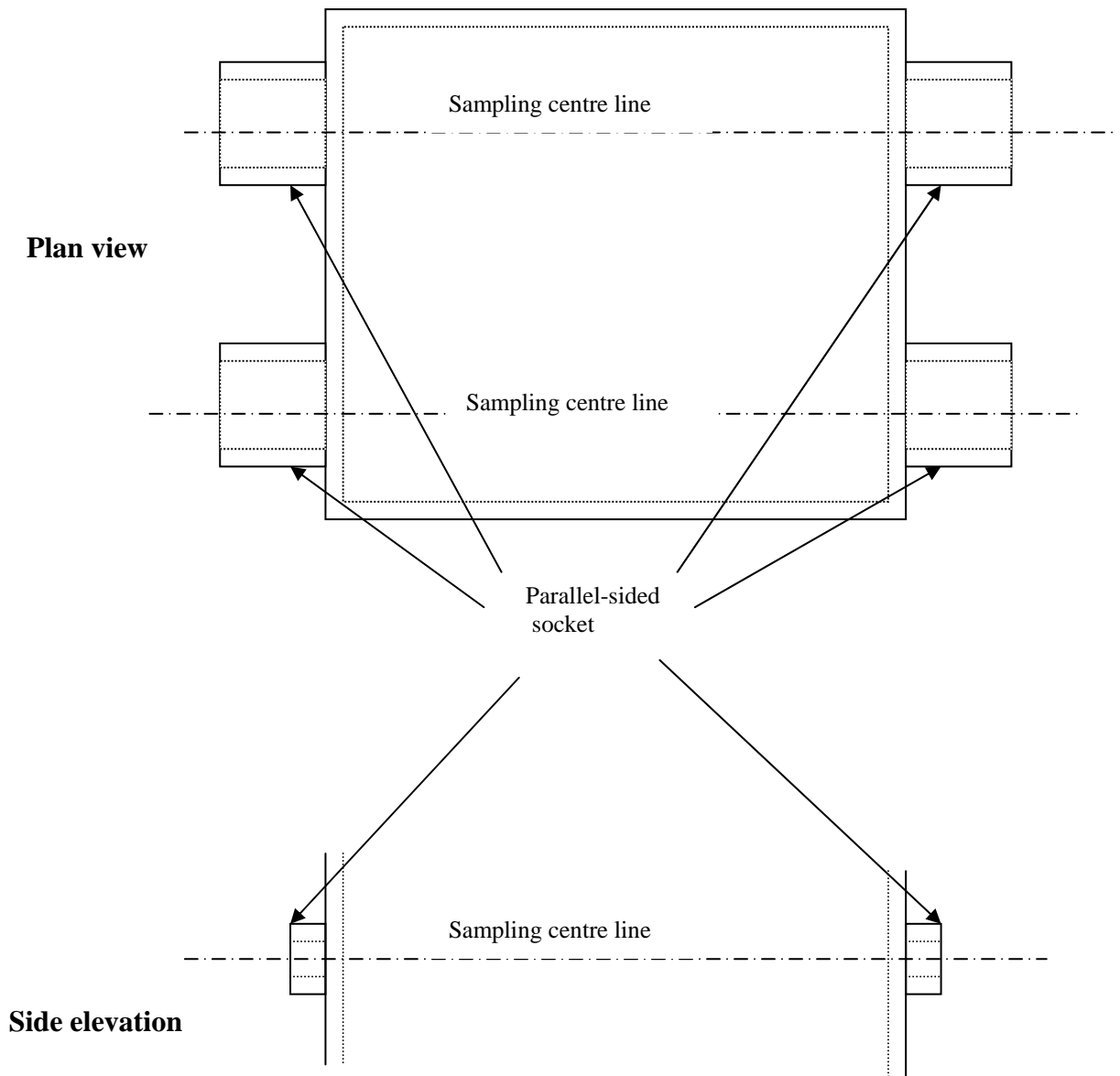
1. Flange BS10 –125mm (5")
2. Pipe stub 125mm schedule 40
3. Pipe stub length should be a minimum of 75mm from the stack wall (recommended is 100mm)
4. Recommendation that 1000mm of Unistrut P1000 is fitted vertically on the centre line of the sample port for positioning of the monorail

**Figure A2.5 Typical arrangement of access fittings on large circular stacks (≥3.6m diameter)**



Note - for small circular stacks, two ports at 90° will usually suffice.

**Figure A2.6 Typical arrangement of access fittings on large square/rectangular stacks**



Note - for small stacks, ports on one side will usually suffice.

## References

1. MCERTS, Manual stack-emission monitoring: performance standard for organisations. Environment Agency. Available from [www.mcerts.net](http://www.mcerts.net)
2. MCERTS, Manual-stack emission monitoring: personnel competency standard. Environment Agency. Available from [www.mcerts.net](http://www.mcerts.net)
3. BS EN 15259:2007 Requirements for measurement sections and sites and for the measurement objective, plan and report.
4. Environment Agency Method Implementation Document for EN 15259. Available from [www.mcerts.net](http://www.mcerts.net)
5. BS EN 14181:2004. Stationary source emissions – Quality assurance of automated measuring systems.
6. Technical Guidance Note M20 - Quality assurance of continuous emissions monitoring systems - application of BS EN 14181 and BS EN 13284-1. Environment Agency. Available from [www.mcerts.net](http://www.mcerts.net)
7. The Working at Heights Regulations (WAHR) 2005. Health and Safety Executive. Available from [www.opsi.gov.uk/si/si2005/20050735.htm](http://www.opsi.gov.uk/si/si2005/20050735.htm).